

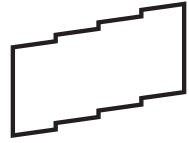


TOGETHER, WE

ENHANCE EXPERIENCE & EMPOWER PEOPLE

THE CULTURE OF HEALING





EXCEPTIONAL EXPERIENCE STARTS WITH EXCEPTIONAL DESIGN.

Patients choose doctors, not buildings.

But when people walk through your doors, what they experience impacts how they feel when they're in your hands.

We do our best work with ambitious leaders in health, who want to design an experience that patients seek out over a lifetime; and one that attracts and retains the best talent. Together, we enhance the healing experience and the professional workplace; shorten the distance between medical breakthrough and patient bedside; and empower people with a sense of control, calm, and well-being when they are at their most vulnerable.

Positively affecting people, from your patients to your professionals, is the most important thing we do.



CONTENTS

| | |
|-----------------------------|----|
| AMBULATORY CARE..... | 07 |
| EMERGENCY DEPARTMENTS | 13 |
| NICU..... | 19 |
| INTENSIVE CARE..... | 23 |
| SURGERY | 27 |
| CANCER CARE | 33 |
| PLANNING..... | 37 |
| PLACES FOR RESPITE | 43 |



AMBULATORY CARE



AMBULATORY CARE

We understand the importance of a cohesive experience—across multiple buildings and locations—with design that sets the stage for your values and distinctive brand.

We combine timeless design principles—such as access to daylight, intuitive wayfinding, and clear arrival hierarchies—with research and knowledge about the forces driving the future of healthcare delivery.

Our designs embrace operational efficiency, while providing ease of care and patient convenience; they're seamless, adaptable, and multi-disciplinary. We understand the core patient experience cycle—arrival, orientation, transition—and integrate it throughout the entire patient journey, from their front door to yours.

HIGHLIGHTED PROJECTS



TriHealth Thomas Comprehensive Care Center
Montgomery, Oh
Full Architectural Services
135,000 SF



UC Health Prototype MOB
Varied Locations (3)
Full Architectural Services
4,900 SF/ea



UofL Novak Center Pediatric MOB
Louisville, Ky
Exterior Lead Design
& Medical Planning
174,000 SF
Collaborated with EYP



The Christ Hospital Montgomery Outpatient Center
Montgomery, Oh
Full Architectural Services
81,000 SF



Allegheny Health Network Westmoreland MOB
Pittsburgh, Pa
Full Architectural Services
23,300 SF



Mercy Health Mason Montgomery
Cincinnati, Oh
Full Architectural Services
55,000 SF



AMBULATORY EXPERIENCE

UC Health Physicians

- Over 35 Outpatient Clinics
- Lindner Center of HOPE Accelerator

Cincinnati Children's

- Over 35 Outpatient Clinics

The Christ Hospital Health Network

- Green Township Outpatient Center
- Montgomery Surgery Center
- Montgomery Outpatient Center
- Liberty Township Outpatient Center**
- Green Township Bldg II Site Planning
- Ft. Mitchell Outpatient Campus Study

Mercy Health

- Rookwood Medical Center**
- Mason Montgomery MOB
- Mercy Health Bon Secours Outpatient Prototype Studies

The Urology Group

- Ambulatory Surgery Center
- The Urology Center

Allegheny Health Network

- Westmoreland MOB

TriHealth

- Good Samaritan Hospital MOB
- Kenwood MOB
- Anderson MOB
- West Chester MOB
- Western Ridge MOB
- Anderson Surgery Center Exterior Design
- Thomas Comprehensive Care
- Liberty Township MOB
- Butler County MOB

UC Health Physicians

- Florence MOB
- Midtown MOB
- Primary Care Prototype
- University Pointe

Miller Valentine Group

- Precision Radiotherapy

Wellington Orthopedics & Sport Medicine

Anderson Mayfield Clinic & Spine Institute

Red Bank Surgery Center

St. Elizabeth Healthcare

- North Unit MOB
- MOB III

Kings Daughter Medical Center

- Grayson MOB

University of Louisville Physicians

- Novak Center**

Bugshan Investment

- Saudi Arabia Clinics & Day Surgery

Norton Healthcare

- MOB Studies

PUBLICATIONS & PRESENTATIONS



The Future of Ambulatory Care

Cleveland Clinic Patient Experience Summit, 2016
» Jason Groneck with Dwinelva Zachary

Order up! What Retail can Teach us about Designing Environments of Choice

AIA Ohio, 2016
» Marcene Kinney & Angela Mazzi

A NEW BRAND OF CONSUMERS

Loth Healthcare Symposium, 2016
» Angela Mazzi

Salutogenesis in Design

BGSU AIA Spring Lecture, 2016
» Angela Mazzi

5 Design Ideas for Healthcare Waiting Rooms

Healthcare Design Magazine, 2016
» Steph Shroyer

TriHealth Kenwood MOB Case Study

NAIOP Chapter, 2016
» Ted Huster

From Car to Exam: Ideas for Simplifying the The Visitor Experience

Healthcare Symposium, 2016
» Michael Lied, Erin Schmidt, Anne Schwab

Waiting Room Trends

Healthcare Symposium, 2015
» Steph Shroyer, Marcene Kinney, Michael Lied

Waiting Rooms: How to Design to Impress

Healthcare Design (HCD), 2016
» Steph Shroyer, Amy Mees, Michael Lied

**Collaborated with additional firm



EMERGENCY DEPT.



EMERGENCY DEPARTMENT (ED)

When patients leave an ER without being seen, something isn't working. Emergency department volumes fluctuate. Planning for those fluctuations means more patients can get timely treatment. We help you balance the volume highs and lows so you can get the most out of your space and ensure staff has the resources and supplies it needs, when it needs them.

Safety, security, quality, supply chain, flow, and a dignified patient experience all contribute to the efficiency and optimization of EDs. We bring these elements together at every scale—from 10 bed EDs in community hospitals, to stand alone EDs in busy urban environments, to multiple ED units within healthcare systems.



Post ED renovation, Hardin Memorial reduced LWOBs from 5.3% to 2.1%

HIGHLIGHTED PROJECTS



**UPMC Mercy
Emergency Dept.**
Pittsburgh, Pa
Full Architectural Services
24,000 SF Renovation



**Cincinnati Children's
Emergency Dept.**
Cincinnati, Oh
Full Architectural Services
24,385 SF Renovation



**Mercy Health
Rookwood Free Standing
Emergency Dept.**
Cincinnati, Oh
Architect of Record
25,000 SF
Collaborated with AECOM



**Hardin Memorial
Emergency Dept.**
Louisville, Ky
Design Architect
25,000 SF Renovation
Collaborated with JRA



ED EXPERIENCE

UPMC Mercy
ED Renovation & Expansion

Magee-Womens Hospital of UPMC
ED Renovation and Addition

McCullough Hyde Memorial Hospital
ED Expansion Study

Hardin Memorial Hospital
ED Renovation & Expansion

Children's Hospital of Pittsburgh
ED Expansion

UK HealthCare
• Patient Care Facility ED**
• Pediatric ED**

The Christ Hospital Health Network
ED Renovation

St. Claire Regional Medical Center
ED Renovation

Mercy Health**
Rookwood Free Standing ED

Cincinnati Children's
ED Renovation

Cleveland Clinic - Hillcrest Hospital*
ED & Pediatric ED Renovation & Expansion

Cleveland Clinic - Euclid Hospital*
ED Expansion & Renovation

Cleveland Clinic - Twinsburg*
ED

Mercy Health Fairfield Hospital
ED Level II Trauma Center

TriHealth
Good Samaritan ED Renovation
Bethesda North ED Registration & Triage
Liberty Urgent Care

St. Elizabeth Healthcare
Grant ED Expansion

ED PUBLICATIONS & PRESENTATIONS



Optimize Your High Volume ED
Healthcare Design, 2018
» Jason Groneck

ED Design Consideration - Two Different Approaches to Workflow
Healthcare Facilities, 2017
» Benjamin Earls

UPMC ED Case Study: ED Design: A Practical Guide to Planning for the Future, 2016
» Angela Mazzi
The editor of this book chose to feature our project as a case study as exemplary planning and design of their emergency department.

Healthcare's New Normal:
Employing Cognitive Research to Create Patient-Centered Solutions
ASHE PDC Conference, 2016
» Angela Mazzi

Angela's presentation focuses on salutogenesis and other cognitive research to provide evidence-based solutions that promote well-being. Part of the Through the Patient's Eyes Series.

Emergency Department Design Trends
Health Facilities Management, Magazine: 2015
» Angela Mazzi

There's no shortage of ideas to solve the puzzle of emergency department bottlenecks. This article explores everything from fast-tracks to results waiting and lets you know what works, what doesn't, and why.

High Volume Healthcare as a Livable Environment: *Strategies from the ED*
ACHA Online publication: 2014
» Angela Mazzi, Stephanie Shroyer, Jason Groneck

This paper recommends evidence-based strategies to improve the patient experience by promoting flow, quality of care, safety and security.



Evolution of the ED
AIA Academy of Architecture for Health, Academy Journal: 2012
» Angela Mazzi

Evolving a design concept takes time and careful attention to detail. By focusing on a clear set of outcomes, applying both precedent and observation, a distinct and innovative design emerges.

*Completed by GBBN team member while employed by another firm.

**Collaborated with additional firm





NEONATAL INTENSIVE CARE UNITS (NICU)

Our NICU designs combine expertise and empathy. We understand the nature of the NICU’s highly specialized care as well as the physical and emotional highs and lows that families and staff experience in this emotionally intense environment.

Controlling light, temperature, and noise around vulnerable premature babies is critical to their survival. Equally important is the balance of privacy and proximity: Rooms private enough for parents to stay close yet accessible enough for nurses to get there in a heartbeat.

Decibels and lighting degrees; patient rooms arrayed into manageable neighborhoods for staff coverage; family support and respite spaces, intuitive wayfinding, and security considerations all come into play in the NICU environment.

HIGHLIGHTED EXPERIENCE



Cincinnati Children’s NICU
Cincinnati, Oh
Medical Planning &
Full Architectural Services
28,000 SF Renovation



UK HealthCare* NICU
Lexington, Ky
Medical Planning & AOR
39,000 SF Renovation
Collaborated with HGA Archtiects, Inc.



TriHealth Good Samaritan NICU
Cincinnati, Oh
Medical Planning
Full Architectural Services
28,000 SF Renovation



Children’s Hospital of Philadelphia NICU Renovation
Philadelphia, Pa
Programming, Design, CDs, CA
39,900 SF Renovation



INTENSIVE CARE



INTENSIVE CARE UNITS

An ICU—be it pediatric, coronary, or neurological—is a complex environment. More resources—from specialist physicians and nurses to medical equipment—need to come to the patient. Lighting and acoustics require careful consideration. Thanks to advances like portable ventilators, patients may spend less time in bed and more time moving about, often accompanied by family who want to remain by their loved one’s side.

In addition to its medical complexity, an ICU is an intense and emotional atmosphere. Respite spaces—where staff and families can find a moment of relief from a stressful environment—create breathing room that can enhance the healing process.

EXPERIENCE

UK HealthCare
Patient Care Facility ICUs**

TriHealth Good Samaritan Hospital
ICU 7A Renovation

TriHealth Good Samaritan Hospital
ICU 7B Renovation

TriHealth Good Samaritan Hospital
Neuro ICU

TriHealth Good Samaritan Hospital
Cardiac ICU

TriHealth Good Samaritan Hospital
NICU

UPMC Mercy
ICU Study

TriHealth Bethesda North Hospital
NICU

Mercy Health Fairfield Hospital
NICU

Cincinnati Children’s
NICU

Cincinnati Children’s
CICU

Cincinnati Children’s
PICU

St. Elizabeth
SICU

***Collaborated with additional firm*



SURGERY



SURGERY

Ensuring your operating rooms are flexible, efficient, and optimized impacts your bottom line. Getting ORs right is as critical as the surgeries performed within them.

We understand the complexity of surgical environments— the flows, the codes, the equipment, circulation, turnover, safety, and the technological advances impacting the future of surgery— and what it takes to get them right.

We deploy the right tools— such as full-size mock ups, close collaboration with surgical teams, and our established relationships with specialty consultants and equipment manufacturers— to design optimum spaces.

HIGHLIGHTED PROJECTS



**Cincinnati Children's
Surgery Master Plan &
Phased Implementation**
Cincinnati, Oh
Full Architectural Services



**The Urology Group
Surgery Center**
Cincinnati, Oh
Full Architectural Services



**UK HealthCare
Surgery Suite**
Lexington, Ky
Full Architectural Services
Collaborated with AECOM



**The Christ Hospital
Health Network
Liberty Surgery Center**
Cincinnati, Oh
Lead Exterior Design
AOR Interiors
Collaborated with HKS



**The Christ Hospital
Montgomery Surgery Center**
Montgomery, Oh
Full Architectural Services



EXPERIENCE

We have experience in the following surgery typologies

ORTHO
HEART
UROLOGY/GYNECOLOGY
ENDOSCOPY
CYSTOLOGY
NEURO
EAR, NOSE, THROAT
EYE
C-SECTION
TRANSPLANT
FETAL
HYBRID

Cincinnati Children's
Surgery, Master Plan
& Implementation

Nationwide Children's
Surgery Master Plan

The Christ Hospital Health Network
Montgomery Surgery Center

The Christ Hospital Health Network**
Liberty Surgery Center

The Christ Hospital Health Network
Ft. Mitchell Surgery Center Study

The Christ Hospital Health Network
Green Township
Outpatient Center w/ Surgery

The Christ Hospital Health Network
Redbank Surgery Center

UK HealthCare**
Surgery Suite

St. Elizabeth Healthcare
Surgery Renovations

The Urology Group
Surgery Center

TriHealth
Over 10 Surgery Projects

Mayfield Clinic & Spine Institute
Surgery Center

Cleveland Clinic, Hillcrest Hospital*
Surgery Center

Salem Community Hospital*
Surgery Center

SURGERY PUBLICATIONS & PRESENTATIONS



Reworking the Healthcare Workspace
Healthcare Design Magazine, 2014
» Erin Schmidt, Angela Mazzi

A Look at the Future of Healthcare Design
HealthTech Facilities Alliance and Council
» Angela Mazzi

A Place for Healing: The Crucial Role of Design in Healthcare
Healthcare Innovation by Design Webinar, 2012
» Angela Mazzi

Epicenter of Innovation: A discussion of global healthcare trends
AIA Ohio Convention, 2017
» John Blignaut, Angela Mazzi

* Work performed by team member while with another firm.
**Collaborated with additional firm



CANCER CARE



CANCER CARE

Nearly 1 in 3 Americans will be diagnosed with cancer in their lifetime.* As treatment continues to advance, one thing never seems to change: A patient's feeling that they're defined by a diagnosis and controlled by cancer.

We enhance the healing process through consultation rooms, infusion spaces, and waiting areas that restore the spirit and renew energy. We craft workspaces that support the collaborative, multi-disciplinary nature of today's cancer treatment.

We believe space has the power to help everyone dealing with cancer feel more empowered and in control.

**Source: American Cancer Society*

EXPERIENCE

The Christ Hospital Health Network
Montgomery Cancer Center

Cincinnati Children's
Cancer & Blood Disease Institute

UC Health Physicians
Precision Radiotherapy
& Linear Accelerator Expansion

McCullough Hyde Memorial
Outpatient Oncology Center

UC Health Medical Center
• UC Barrett Cancer Clinic Renovation
• UC Barrett Cancer Center Master Plan

UK HealthCare
Markey Cancer Center,
Inpatient Floor Fitout

TriHealth Cancer Institute
• Thomas Center
• Butler
• Western Ridge
• Kenwood

University of Louisville
Novak Center
Collaborated with EYP

St. Elizabeth Healthcare
Edgewood Cancer Care

PUBLICATIONS/PRESENTATIONS



**Tackling Staff Opt-Out & Burnout:
Radical Workspace Antidotes**
ASHE PDC Summit, 2019
Melissa Dulisse, Angela Mazzi & Erin Schmidt



**What does workspace have to do with it?
Radical approaches to work & educational space**
Healthcare Design, 2018
Melissa Dulisse, Angela Mazzi & Erin Schmidt

**Identifying the Positive
in Oncology Environments**
Healthcare Symposium, 2014
Angela Mazzi & Erin Schmidt

**The Healing Power of Design:
CCHMC Pet Center**
AAH Journal, 2015
John Blignaut & Aaron Anderson



PLANNING



PLANNING

"At sixteen I had surgery on a collapsed lung. I remember being scared, but one detail has always stuck with me. The elevator we rode from the parking garage to the concourse opened to a blank wall with nothing but a closet. I wasn't sure where to go or what was next."

—Maggie, third year design student, University of Cincinnati

When space planning and medical planning take place in separate silos, so much can get lost in translation, like how to establish hierarchies that guide patient arrival, empower them with confidence, and reduce anxiety.

We integrate space and medical planning from the beginning because the final result—be it concourse, clinic, or campus—creates a better, more efficient experience for everyone.

HIGHLIGHTED PROJECTS



**University of Louisville
Health Novak Center
Building Planning**
Louisville, Ky



**TriHealth
Medical Office Building
Building Planning**
Kenwood, Oh



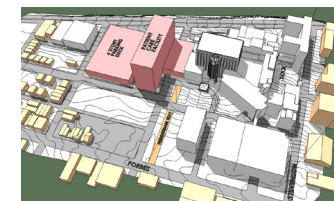
**Cincinnati Children's
Master Planning**
Cincinnati, Oh



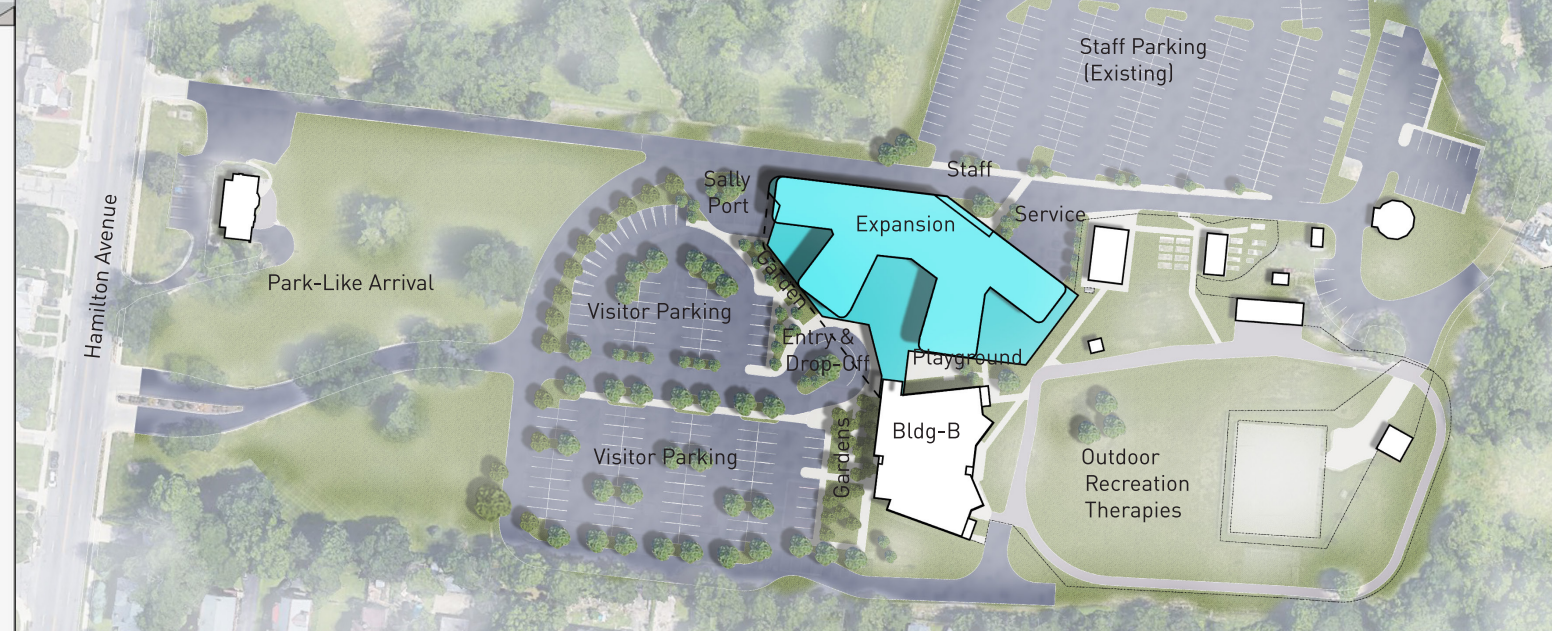
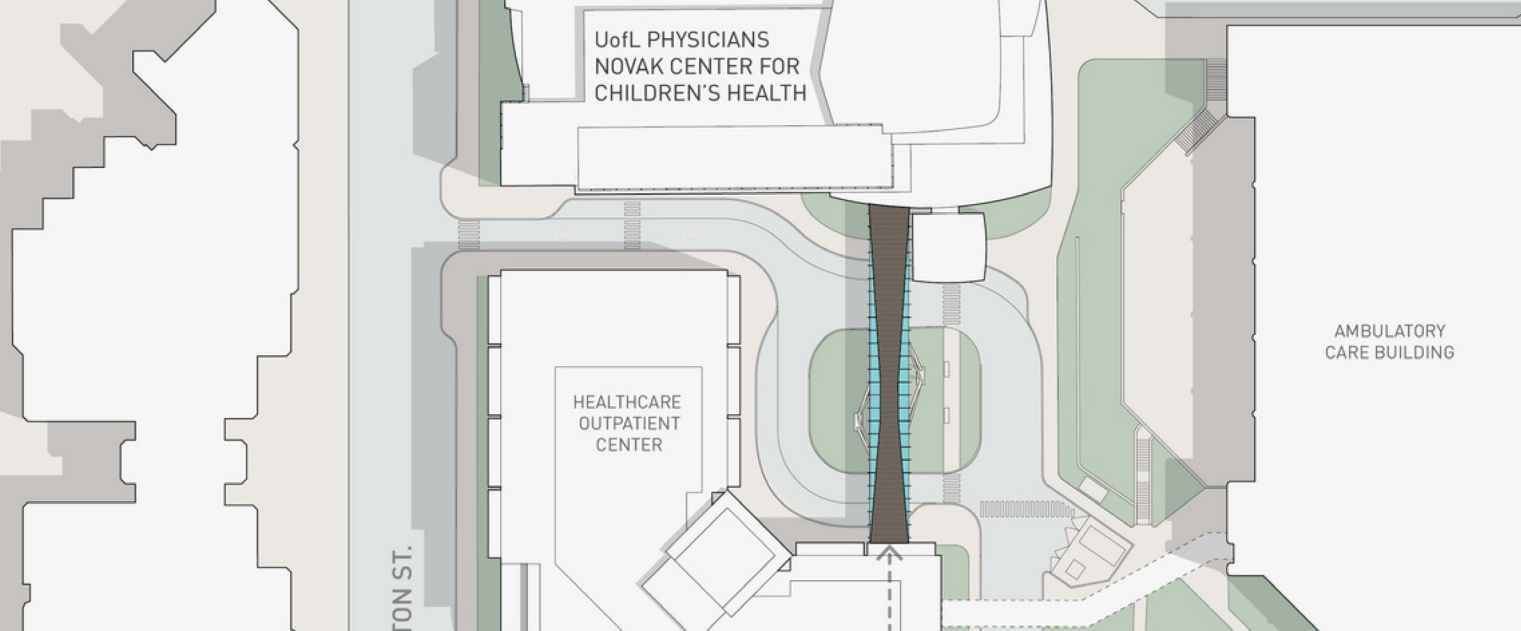
**UK HealthCare
Health Patient Care Facility
Building Planning**
Cincinnati, Oh



**TriHealth Cancer
Master Planning**
Cincinnati, Oh



**UPMC
Master Planning**
Pittsburgh, Pa



EXPERIENCE

Strategic Planning

TriHealth Cancer
System-wide Planning

Cincinnati Children's
Critical Care Building

UK Healthcare
Patient Care Facility

Master Planning

Cincinnati Children's
Main Campus

UPMC
Mercy Master Plan

UPMC
Presbyterian Hospital

Mercy Health
Deerfield Healthcare Campus

TriHealth
Thomas Comprehensive Care

Medical Planning

UK HealthCare
NICU

Cincinnati Children's
Critical Care Building

Bugshan Investment
Saudi Arabia Clinics
& Day Surgery
Ambulatory Center

Building Planning

Cincinnati Children's
Arrival Renovation

UPMC Shadyside
Bed Tower Renovation

The Urology Group
New Surgery Center

TriHealth Group Health
Multiple MOBs

The Christ Hospital
Liberty Medical Center

University of Louisville
Physicians
Novak Center

PLANNING PUBLICATIONS & PRESENTATIONS



Communities Healthy by Design
AIA Cincinnati Urban Design Salon, 2018
» Angela Mazzi

Preparing for the next 50 Years
Healthcare Design, 2016
» John Blignaut, Jack Randall

From Car to Exam: Ideas for Simplifying the The Visitor Experience
Healthcare Symposium, 2016
» Michael Lied, Erin Schmidt, Anne Schwab

The Future of Ambulatory Care
Cleveland Clinic Patient Experience Summit
» Jason Groneck



Home Sweet Home: The Health Hub of the Future
SXSW (South By South West) 2016
» Angela Mazzi

What are hospitals doing to our cities?
Healthcare Design
» Michael Lied, Angela Mazzi

Creating a Facility Master Plan for Pediatric Long Term Care
Pediatric Complex Care Academy Journal: 2012
» Steve Kenat

Sick Cities: Is Design the Cure?
Design REALIZED Webinar, 2015
» Michael Lied, Angela Mazzi



PLACES FOR RESPITE



HEALING GARDENS, GREEN SPACE, & RESPITE

Turnover of registered nurses costs a hospital between \$5.2M - \$8.1M annually; 50% of RN's have considered leaving nursing due to stress.*

Staff burnout is real. Respite moments can rejuvenate the spirit through light, color, and access to nature. A calm spot to pause or a place to briefly step away for some fresh air (that's mere steps from the unit) can address burnout and help retain top talent. Small moments— strategically placed— send a powerful message to employees: You are valued.

We believe so strongly in the importance of respite spaces that we have donated the funds for their creation at both TriHealth and The Christ Hospital Health Network.

**Source: Advisory Board*

HIGHLIGHTED PROJECTS



**Cincinnati Children's
Clinical Sciences Pavilion
Rooftop Terrace**
Cincinnati, Oh
Full Architectural Services



**The Christ Hospital
Liberty Outpatient Center
Respite Outdoor Areas**
Butler County, Oh
Full Architectural Services



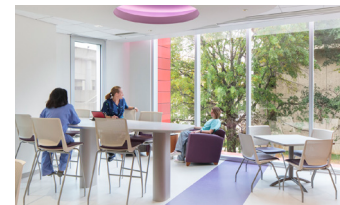
**UK HealthCare
Patient Care Facility
Green Roof**
Lexington, Ky
Full Architectural Services



**Cincinnati Children's
Family Pet Center**
Cincinnati, Oh
Full Architectural Services



**Mercy Fairfield Hospital
Inpatient Unit Respite Spaces**
Fairfield, Oh
Full Architectural Services



**University of Louisville
Physicians Novak Center**
Louisville, Ky
Exterior Lead Design
& Medical Planning
Collaborated with EYP



EXPERIENCE

Cincinnati Children's
Clinical Sciences Pavilion
Courtyard, Rooftop Terrace,
& Research Courtyard

Cincinnati Children's
Family Resource Center & Garden

Cincinnati Children's
Cancer & Blood Diseases Institute
Lounges

Cincinnati Children's
Location A Concourse

Cincinnati Children's
Cafeteria

**University of Louisville Physicians
Novak Center****
Roof Gardens
& Staff Break Spaces

**University of Louisville Physicians
Novak Center**
Novak Center Bridge

**TriHealth Thomas Comprehensive
Cancer Care**
Mary Jo Cropper
Dressing Rooms

UPMC Presbyterian Hospital
Lawn Oasis

***Collaborated with additional firm*



LEARN & ADVANCE

Professionals accredited in the following

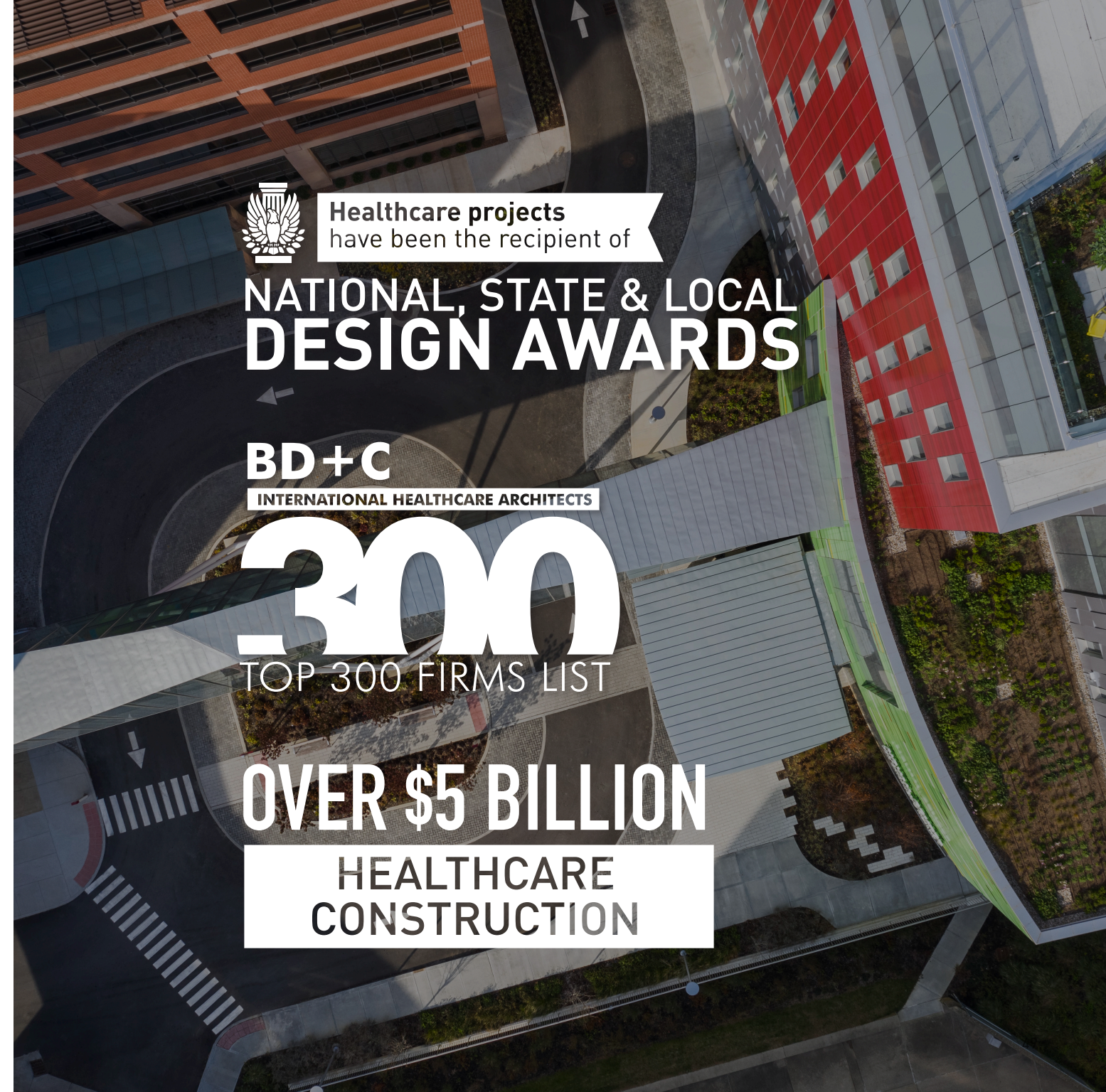


Sample of Speaking Engagements

- AIA Ohio
- AIA Cincinnati
- South by Southwest
- ASHE PDC Summit
- TEDx
- Healthcare Design Conference
- Healthcare Symposium
- BD+C Accelerate Live
- LOTH Healthcare Symposium
- Cleveland Clinic Patient Experience Summit

Sample of Publication Contributions

- Healthcare Design
- Advisory Board Design Showcase
- IIDA Perspective
- American College of Emergency Physicians



Healthcare projects
have been the recipient of

NATIONAL, STATE & LOCAL
DESIGN AWARDS

BD+C

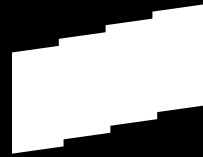
INTERNATIONAL HEALTHCARE ARCHITECTS

300

TOP 300 FIRMS LIST

OVER \$5 BILLION

HEALTHCARE
CONSTRUCTION



**POSITIVELY
AFFECTING
PEOPLE IS THE
MOST IMPORTANT
THING WE DO.**



ENHANCE & EMPOWER

GBBN.COM