



2025 AIA MN Conference

A HEALTH EQUITY FRAMEWORK

Climate, Social, & Economic Factors that Impact Well-Being

1. Why Does Health Equity Matter?
2. Health Equity Framework
3. Health Equity Project Toolkit
4. Project Case Study

AGENDA

LEARNING OBJECTIVES

1. Understand the concept of Health Equity by defining several terms, concepts, and organizations that are tracking it.
2. Define the exposome and the environmental, economic, and social factors that affect health equity and its impact on health outcomes.
3. Understand the components of a Health Equity Toolkit.
4. Learn how to utilize this toolkit to evaluate existing projects in hopes of coming to an understanding of how it can be utilized on future projects.



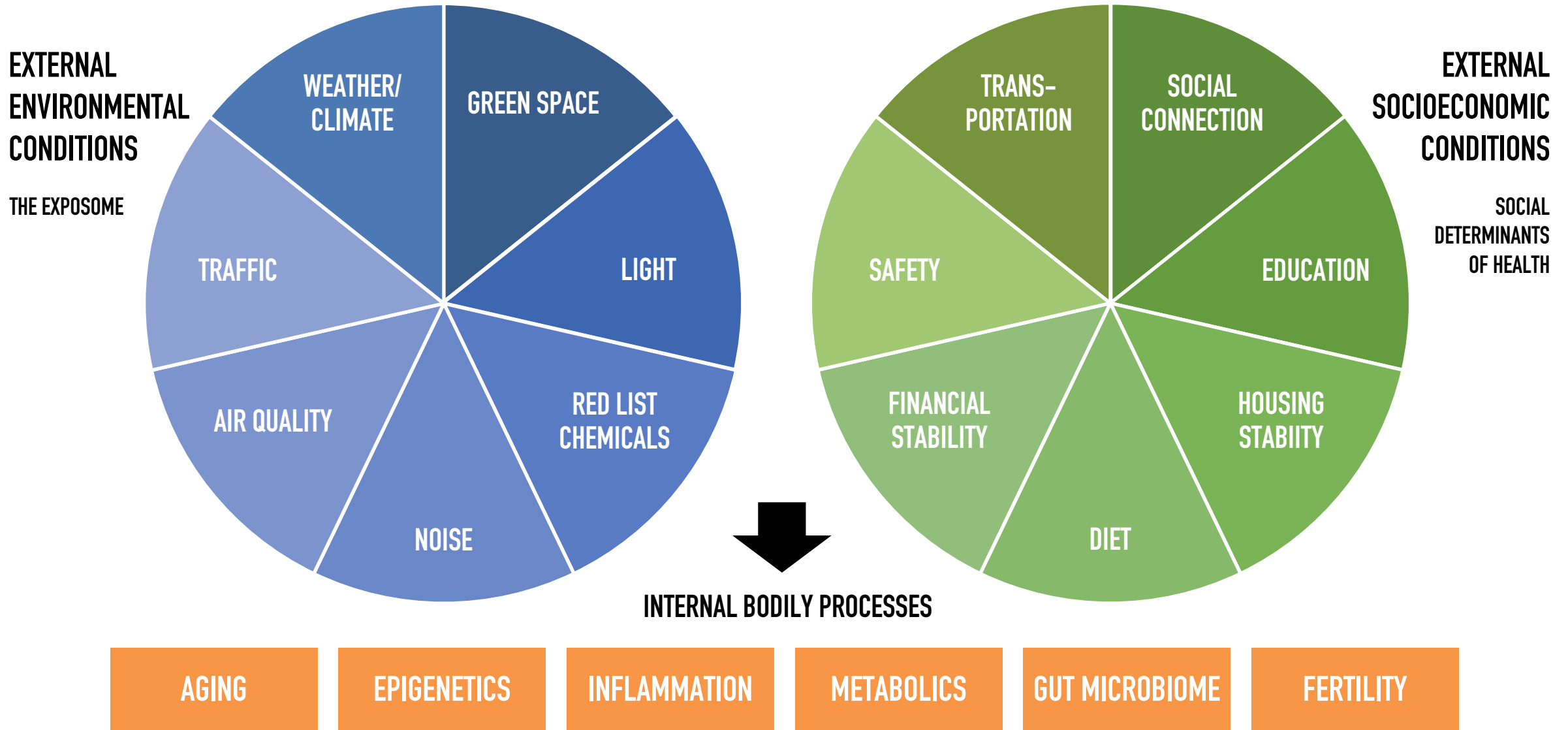
SURVEY



Join at menti.com | use code **1507 7324**



HEALTH EQUITY AND THE EXPOSOME



RESOURCES = RESILIENCE

ECONOMIC

- Education level
- Economic wherewithal
- Generational wealth

ENVIRONMENTAL

- Supportive and safe
- Accessible:
 - To places/events
 - For activities
- Neutralize adverse climate events

SOCIAL

- Diverse
- Culturally competent
- Robust networks
- Health Literate
- Age sensitive



WHO IS TRACKING HEALTH EQUITY:



SHOULD WE STILL CARE?

CMS 2025 Policy will focus on prevention, wellness and chronic disease management. HHS at large is focusing on chronic disease. Equity issues directly impact all of these.

PAIN POINTS IN THE PATIENT JOURNEY

- **Limited Patient Engagement:** When patients feel disconnected from their providers, they're less likely to follow treatment plans or schedule follow-ups, leading to poorer health outcomes.
- **Missed or Incomplete Care:** Access to care, lack of reminders, difficulty scheduling, and communication gaps contribute to non-adherence, which can lead to preventable complications and increased hospitalizations.
- **Attrition & Financial Strain:** Patients frustrated by long wait times, inefficient scheduling, and impersonal interactions often seek care elsewhere, disrupting continuity and impacting revenue.



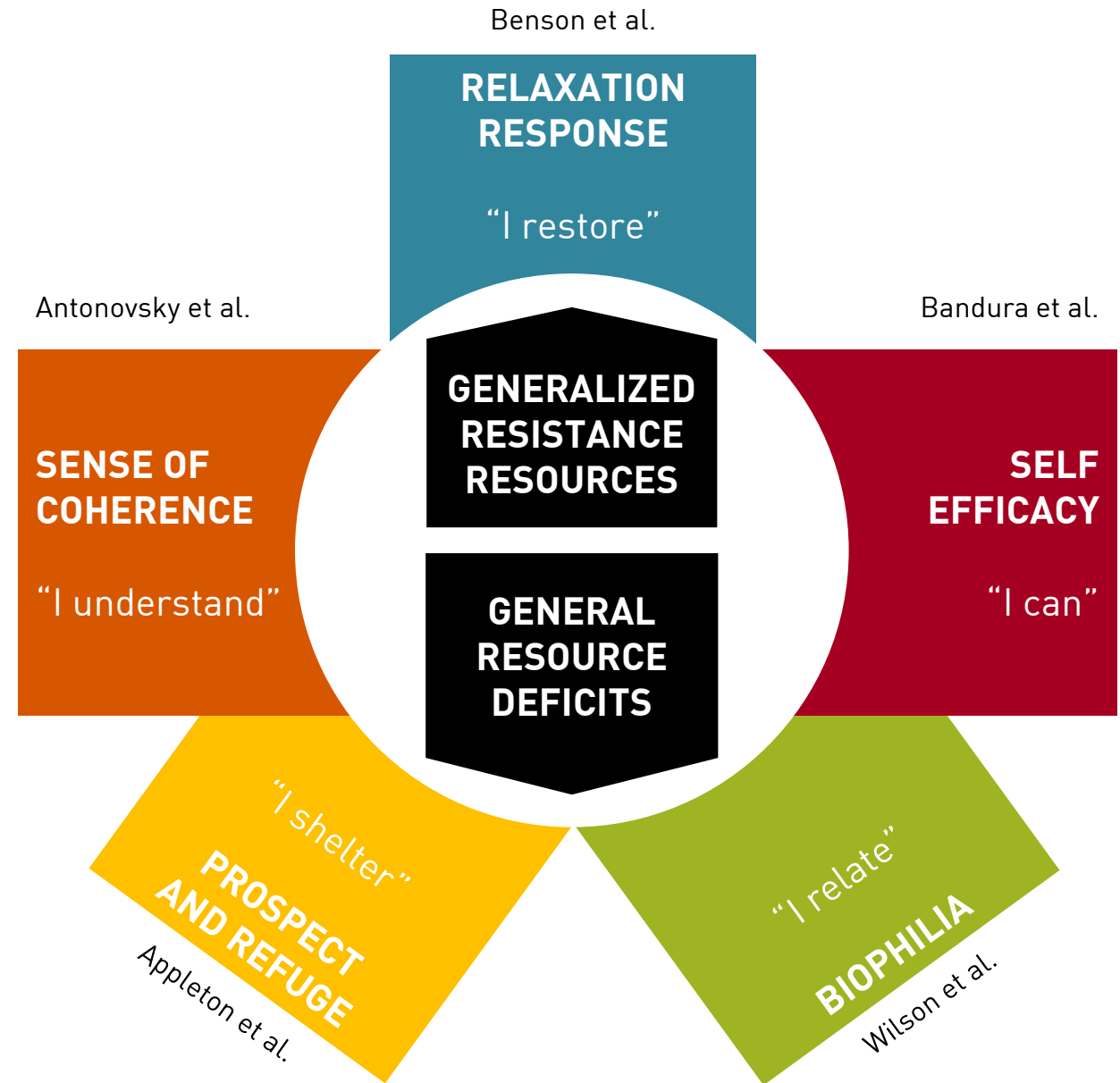
From US HHS



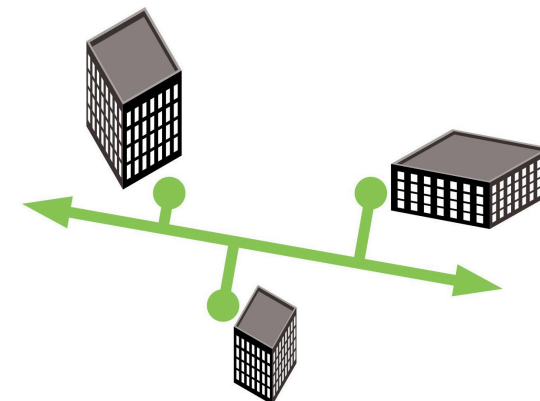
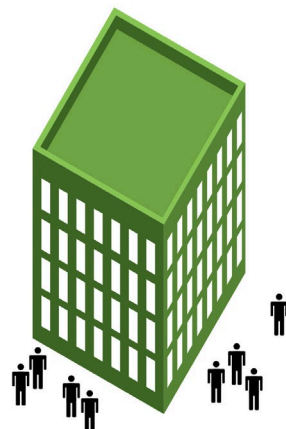
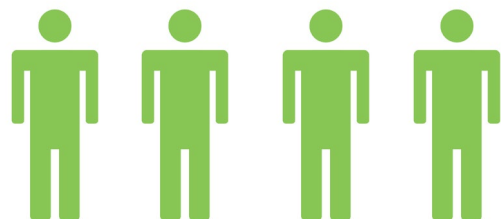
A SALUTOGENIC APPROACH

Salutogenic environments are the spaces that empathetically respond to cognitive, social, and physical needs. They are spaces that make people better.

Focus on alleviating stress and building resilience by providing an abundance of environmental resources for patients, families and staff.

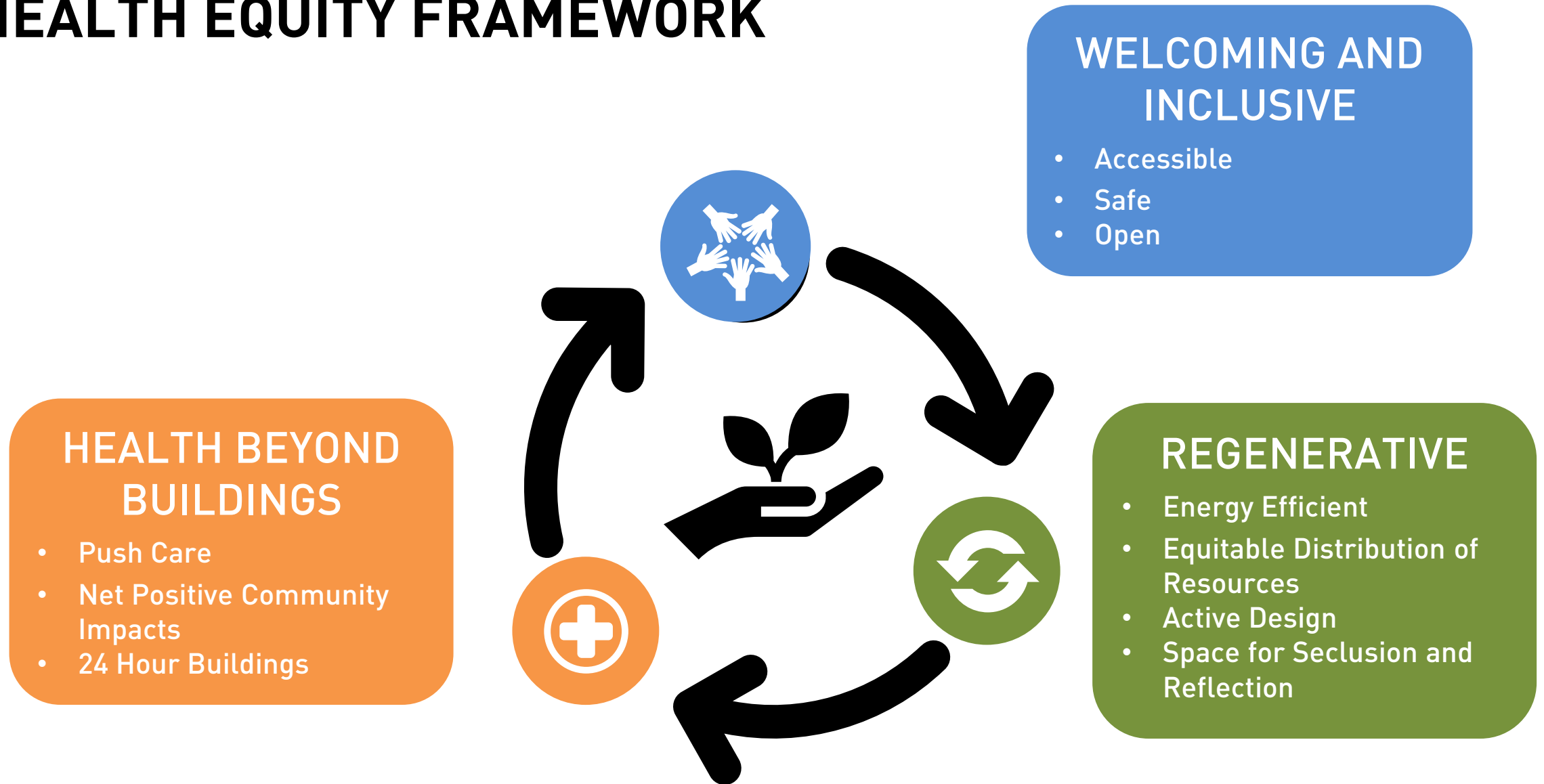


SCALES OF RESILIENCE



	HUMAN	BUILDING	INFRASTRUCTURE
WHAT	Mental and physical wellbeing of the individual	Buildings and physical spaces for one individual to a community	Connecting transportation, utilities, and public commodities
HOW	Providing for respite and recovery	Flexibility to adapt to potential future stressors	Minimizing impact of future use and growth
	Equitable access to healthcare and resources	Using equitable design to increase accessibility	Providing equitable access to resources for all communities
	Optimizing for safety and security from stressors	Minimizing exposure to external stressors	Maintaining systems for optimal operation

HEALTH EQUITY FRAMEWORK



HEALTH EQUITY TOOLKIT

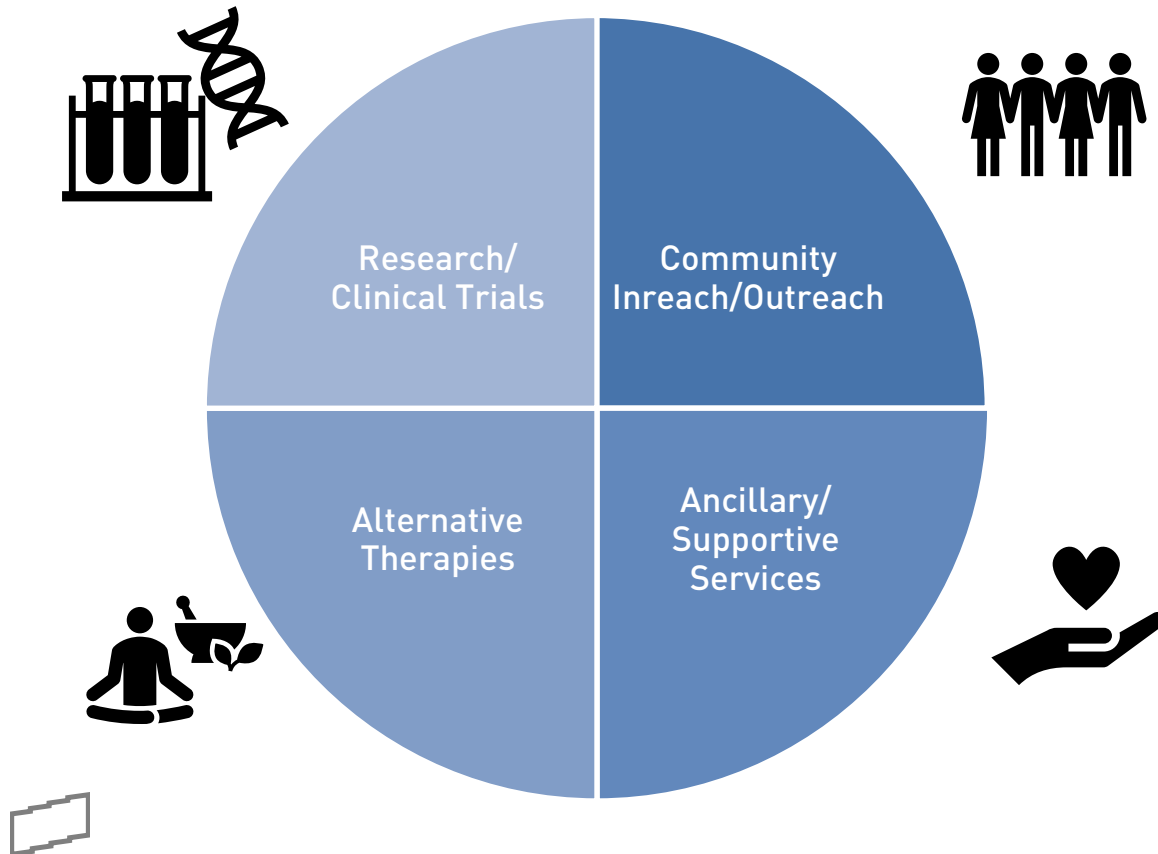
Questions to help a client build their program:

- Who are you serving?
- What resources do you already provide?
- What (if any) resources do you hope to add?
- Are your programs patient-focused or can non-patient community members access them?
- Do you have existing partnerships with outside organizations?



HEALTH EQUITY TOOLKIT

- Tabular Program – lists possible spaces to include in the project
- Functional Program – describes how space can be used to promote health equity



Room Name	No.	Area	Total	Notes / Remarks
PROGRAM MENU				
Community Outreach			include cost range	
Consult Room	1	150	150	Table and chairs or lounge furniture. Seating for 6
Community Room, small	1	500	500	Storage closet for furniture/equipment, counter with upper and lower cabinets, open floor space to accommodate a variety of configurations
Community Room, large	1	800	800	Storage closet for furniture/equipment, counter with upper and lower cabinets, open floor space to accommodate a variety of configurations
Teaching Kitchen	1	75	75	Counter, refrigerator,
Teaching kitchen cart	1	30	30	Electrified, countertop with lower shelves for doing demonstrations using electric skillet or burners.
Food pantry	1	100	100	Room with shelves for housing dry goods/formula or nutrition supplement samples
Healthy Dining				Onsite offerings that are healthy and accommodate dietary restrictions (ie. Gluten free)
Farmers Market				space in an atrium, courtyard or parking lot with electrical hookups
Targeted Retail				Free or reduced cost items that enhance care (wigs, head scarves) or experience (beauty shop, tattoo)
Grocery				Grocery options that fit specific diet recommendations (partnership with local grocery)
Resource Center/ Computer lab	1	250	250	Internet access and training courses, storage for handouts
Community Garden	1	1,000	1000	Sensory garden, horticultural therapy, interactive learning space (partnership with CDC, municipality, university or other non-profit)
Daycare				Drop in short term care and/or partnership with daycare provider located adjacent to site
Health Fair				vendor booths
Ancillary Services/Supportive Care				
Concierge desk	1	120	120	
Behavioral health treatment	1	120	120	
Comfort room	1	100	100	destimulation/sanctuary space to recover from stress
Lactation room	1	80	80	
Nutrition counseling	1	150	150	Office with table and chairs
Spiritual Counseling	1	150	150	Office with table and chairs
Reflection space	1	150	150	Space for solitude or prayer; include marker for Mecca direction
Social Services	1	150	150	Office with table and chairs
Legal Counseling	1	150	150	Office with table and chairs
DME/Gear loan	1	200	200	Carseats, wheelchairs or other specialty equipment
Patient Navigator	1	150	150	Office with table and chairs
Mobile/Pop up health				For screenings/immunizations etc.
Health fair				space in an atrium, courtyard or parking lot with electrical hookups
Family Resource Center	1			
Alternative Therapies				
Reiki	1	120	120	
Accupuncture	1	120	120	
Therapeutic massage	1	120	120	
Holistic Health Exam	1	120	120	
Palliative care	1	150	150	Combo exam/consult space
Hypnotherapy	1	120	120	
Alternative/herbal Pharmacy	1	120	120	
Research/Clinical Trials				
Research study coordinators	1	25	25	st/person sized to accommodate staff on site
Research office	1	120		
Research Equipment Storage				
Research record storage				
Research Medication room				
Research Lab				includes space for send out packing
Consent/Education room	1	120	120	
Vitals	1	100	100	Height/weight, vital signs, blood draw
Exam Room	1	120	120	



CASE STUDY: CHRISTUS CANCER CENTER

SANTA FE, NM



SANTA FE DEMOGRAPHICS

	Santa Fe	USA
Population 2020	87,505	308,745,538
Population, percent change	4.7%	6.3%

	Santa Fe	USA
Persons under 5	4.7%	6.0%
Persons under 18	18.9%	22.3%
Persons 65 and over	22.6%	16.5%

	Santa Fe	USA
Foreign born persons	14.6%	13.6%

	Santa Fe	USA
Language other than English	35.7%	21.6%

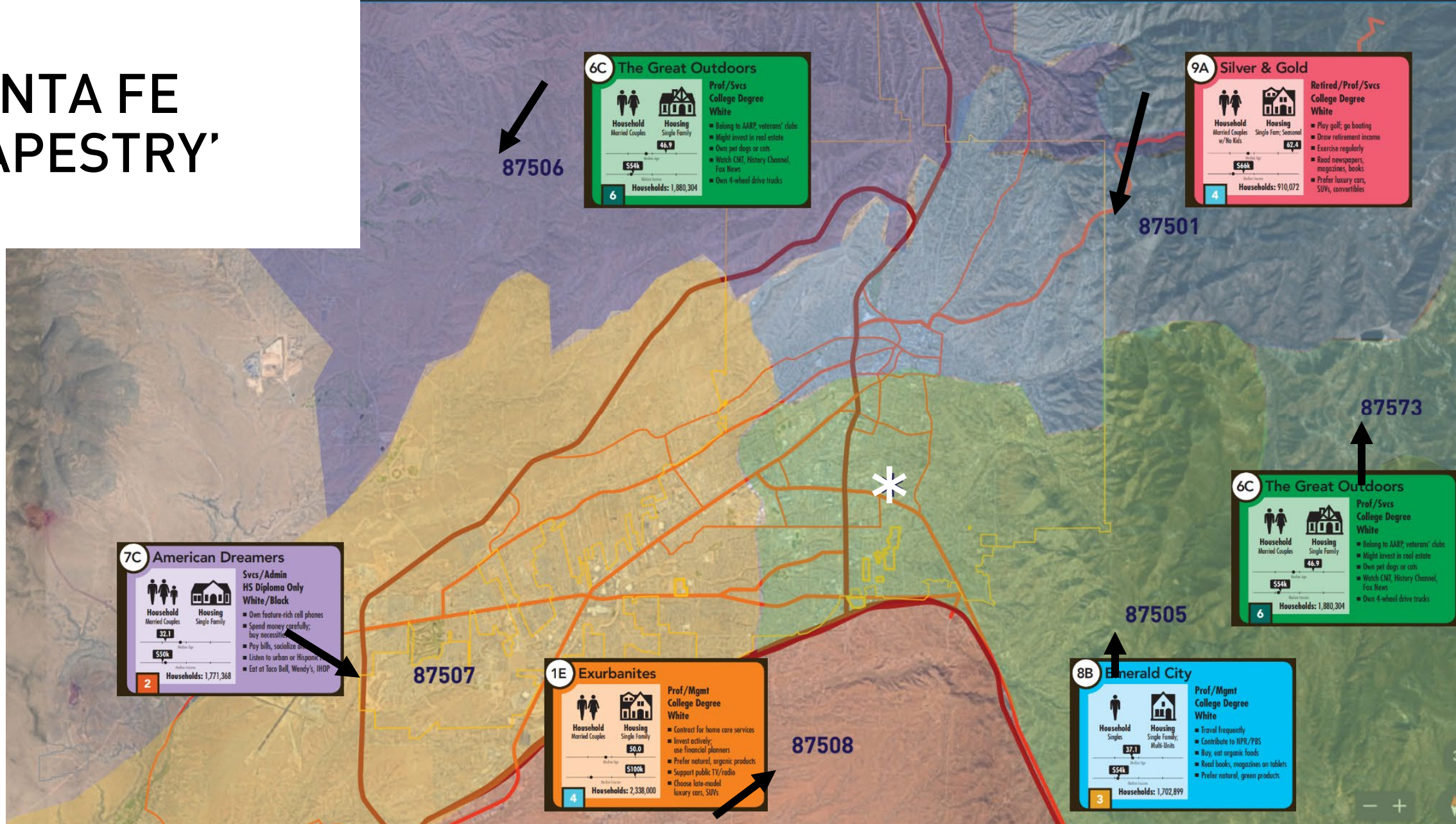
	Santa Fe	USA
Hispanic / Latino alone	55.2%	18.5%
White, non-hispanic alone	40.0%	60.1%
Two or More Races	2.9%	2.8%
American Indian / Alaska Native alone	1.8%	1.3%
Black or African American alone	1.2%	13.4%
Asian alone	1.1%	5.9%
Native Hawaiian / Pacific Islander alone	0.2%	0.2%

	Santa Fe	USA
Owner-occupied housing units	62.7%	64.0%
Median Value of owner-occupied housing units	\$280,800	\$217,500
Median gross rent	\$1,080	\$1,062
Living in same house 1 year ago	88.5%	85.8%

	Santa Fe	USA
Persons without health insurance	16.4%	9.5%
Persons in poverty	13.5%	10.5%



SANTA FE 'TAPESTRY'



OBSERVATIONS



PATIENTS

Know the challenges they face

- Older population with higher cancer risk
- Challenges with screening/prevention strategies for undocumented population
- Overcoming cultural aversions to screenings/treatment compliance
- Language barriers: 36% do not speak English at home



AVATARS

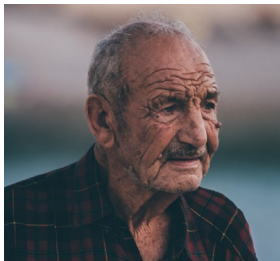


Danielle
Age 28
Young working mother
Breast Cancer

ISSUE	PEOPLE	PROCESS	PLACE
Comes with four children and family	Ambassadors to guide and welcome	Self serve amenities Care coordinators	Daycare Playground Garden Cafe
Trying to work	Schedulers	Schedule around her job Extended hours of operation	Good internet connection
Fertility issues	Physician, social worker, nurs educator	Make sure patient understands potential issues	Social worker office Education room Exam room with consult table Big consult rooms with lounge furniture
Financial issues	Financial counselor, specialty testing not covered by insurance	Enroll in clinical trials, co pay assistance program	Consult room, Financial counselor office
Mental Health Issues	Psychologist, nurse educator, physician	Deal with fertility concerns	Consult room



AVATARS



Jose
Age 65
Estranged from Family
Head and Neck Cancer



ISSUE	PEOPLE	PROCESS	PLACE
Transportation issues, from remote rural area with no support system	Social worker, Foundation	Coordinate family resources Provide housing during treatment Provide transportation	Dedicated rooms at Santa Fe Suites Hospital based housing that is walkable
Will get very sick	Dietician, nurses, pain management	Connect with palliative care early Support group Help deal with extreme pain	Education or community room with remote capabilities Dedicated telehealth rooms Private area in waiting room Palliative care center
Under resourced- lives in cabin with no running water		Provide temporary housing during treatment Access to food/grocery store while using temporary housing	Partnership with Residence Inn Access to home health services during stay
Financial issues	Financial Counselor		
Access to healthy food	Social Worker, Cancer Foundation, dietician	Grocery cards Regular check in via virtual appointments	Feeding tube
Build connections	Social work	Other community groups Reconnection with family	
Prescriptions needed are not stocked at typical retail pharmacies	Palliative care Social work	Connect to pharmacy program Meds to ED during education center Large enough quantity of drugs to last until next appointment	Christus Pharmacy Education room

AVATARS



Vivian
Age 70
Divorcee, Isolated from family
Breast Cancer

ISSUE	PEOPLE	PROCESS	PLACE
Isolated no support	Social worker, Neighbor, friends, Palliative care team, navigation team, foundation social worker	Needs sense of community- support groups. Improved communication, meditation and mindfulness	Community space, holistic health, consult rooms, palliative care/holistic health center (massage and acupuncture)
Food insecurity	Dietician, nurses	Food service program	Delivered to her home
Access to bras, prosthetics, wigs	Social worker	Make aware of resource	Patient resource center
Financial Concerns- no supplemental insurance			
One destination for care and support	Ancillary staff	Holistic health, mindfulness and meditation, classes, support groups	Meeting and education rooms



AVATARS



John

Age 55

Prostate Cancer

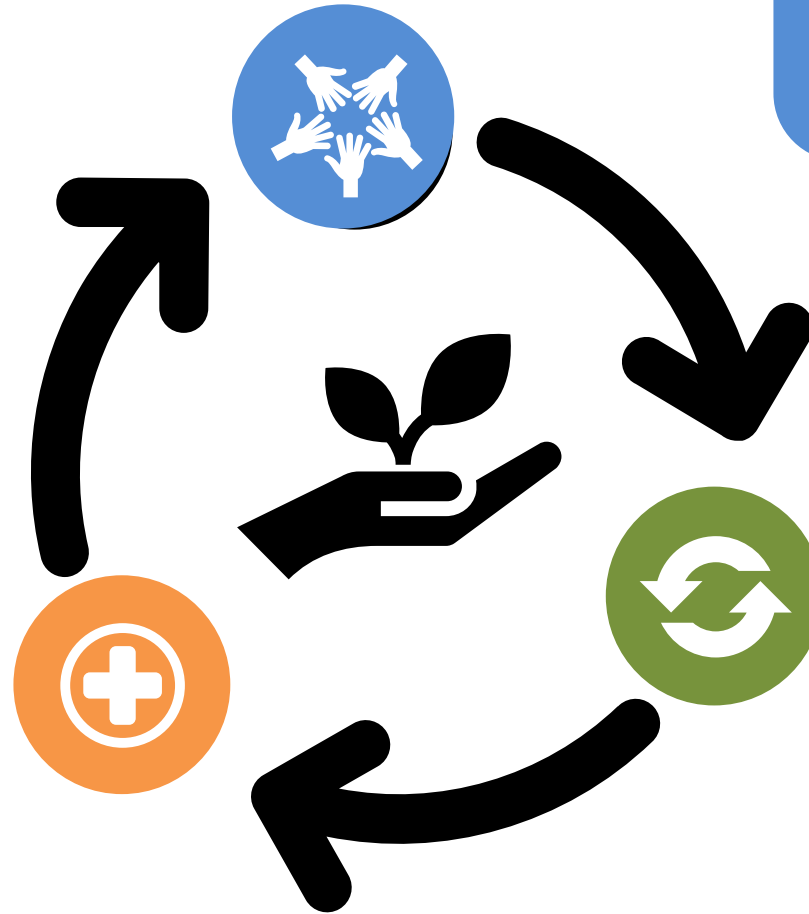
ISSUE	PEOPLE	PROCESS	PLACE
Needs counseling support for themselves and his spouse	Social worker	Refer for couples counseling Keep spouse involved in treatment Help him process through mindfulness, meditation and one to one sessions. Accupuncture and massage therapy	Consult room Palliative care
Taking hormonal therapy and oral chemotherapy	Education Nurse Radiation nurse	Need to be able to understand treatments Assistance to get prescriptions filled	One on one visit with education nurse Education with radiation nurse in exam room
Confused about treatment options	Good consultation with urology and raadiation oncology Nurse navigator	MRI, CT, Bone Scan, PET Scan	Radiation Oncology Imaging
Reduce likelihood of delays in care over decisions about treatment	Financial team Radiation Oncology Medical oncology Palliative care	Convince patient that support and treatment will meet his needs	Exam rooms Consult rooms Palliative care



APPLY FRAMEWORK

**HEALTH BEYOND
BUILDINGS**

- Push Care
- Net Positive Community Impacts
- 24 Hour Buildings



WELCOMING AND INCLUSIVE

- Accessible
- Safe
- Open

REGENERATIVE

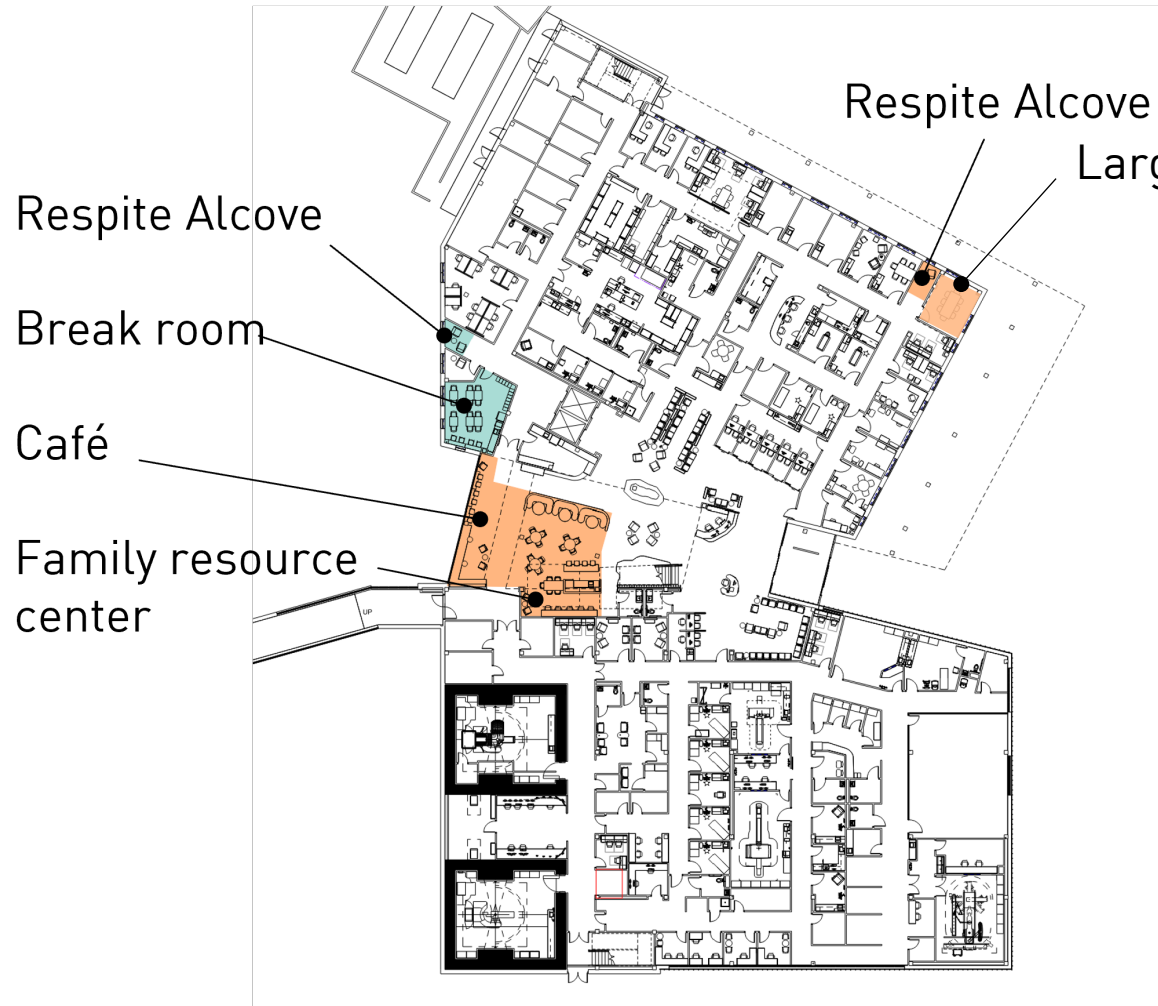
- Energy Efficient
- Equitable Distribution of Resources
- Active Design
- Space for Seclusion and Reflection



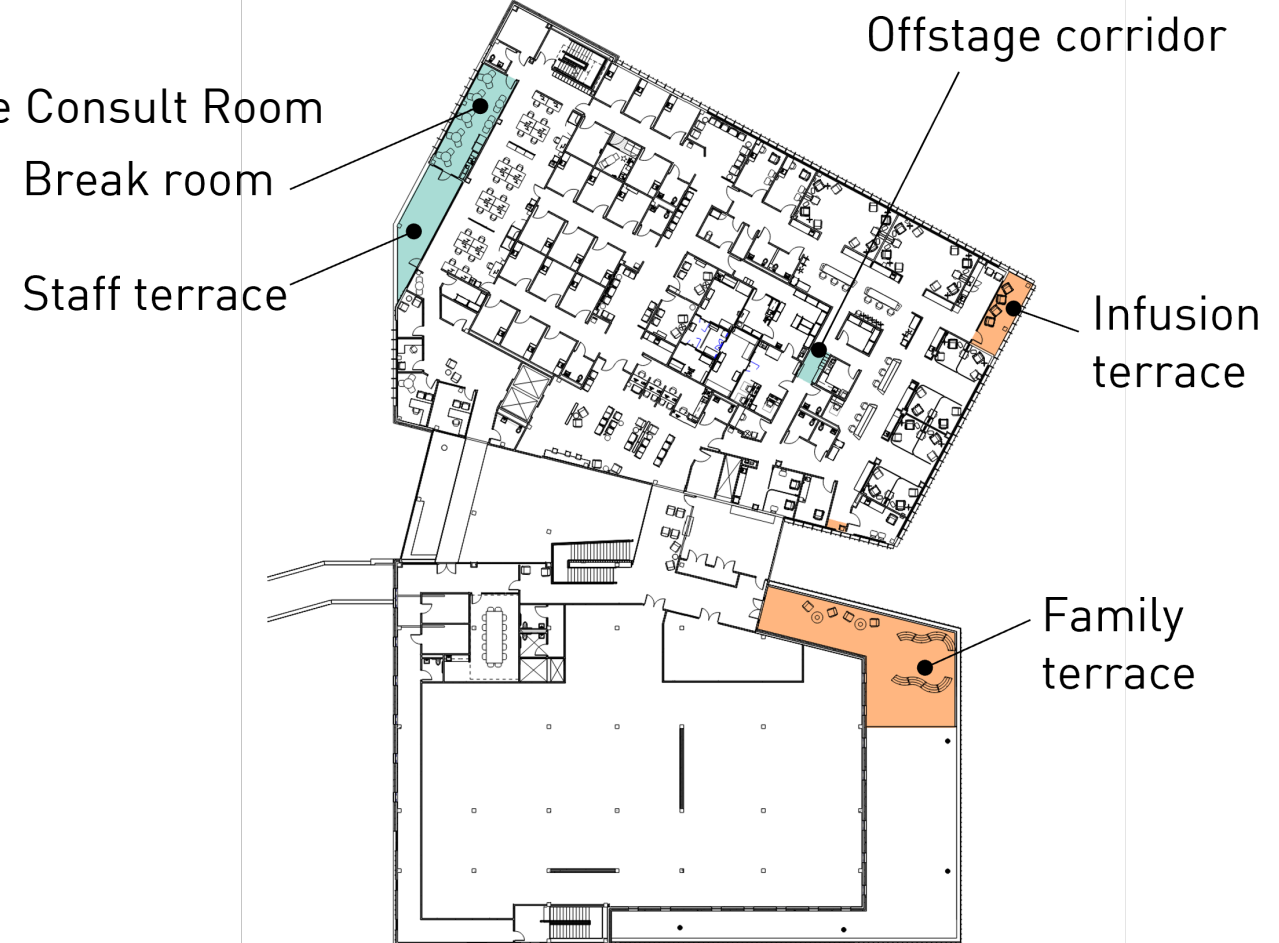
FLOOR PLANS

FIRST FLOOR

- Public/Family Spaces
- Staff Spaces



SECOND FLOOR



HEALTH BEYOND BUILDINGS



Wraparound Services - Ancillary: Genetic Counseling, social services, care navigation, financial assistance, offsite hotel, grocery and pharmacy assistance

Wraparound Services - Community: Café, teaching kitchen, community room, retail, family resource center, roof garden with play area, food pantry

Alternative medicine/palliative care center

Clinical trial clinic and research lab



Acupuncture Room



Teaching Kitchen



WELCOMING AND INCLUSIVE



Accessible: Bariatric Accommodations, accessible routes, diverse staff

Safe: Non-toxic materials used, psychological safety

Open: Access to public transportation, shuttle service, culturally relevant design features, infusion salons, exam consult corners



Patient Transport



Infusion Salon



REGENERATIVE



Regenerative: Reducing energy consumption. Automated building systems, optimized systems (cold beams – much more efficient than VAVs)

Distribution of resources: Access to daylight and nature in public spaces, staff work areas and infusion

Distribution of resources: Outdoor garden and monumental stair encourage movement and activity, infusion patio

Seclusion/Reflection: Lactation room, quiet alcoves



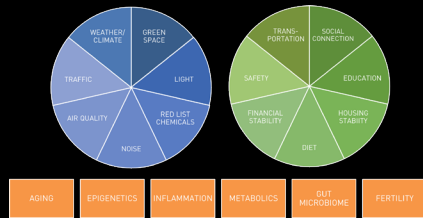
Exterior Terrace



Monumental Stair in daylit Atrium

PUTTING IT TOGETHER

EXPOSOME



STRESS

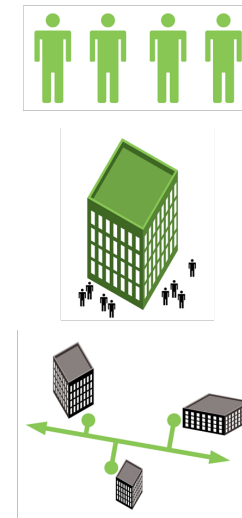
Counter negative external and internal impacts that inequitably cause disease

ASPECTS OF SALUTOGENESIS



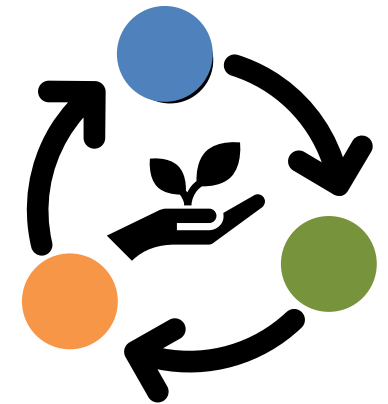
Using Salutogenic strategies

RESILIENCE SCALES



Expressed at multiple scales of impact

HEALTH EQUITY FRAMEWORK



Incorporating an equity lens

















GOING FORWARD

Now it's your turn! Let's work together to help our clients achieve buildings that are welcoming and inclusive, regenerative, and promote health and wellbeing

Are you a client interested in participating in our research? Please reach out!



Room Name	No.	Area	Total	Notes / Remarks
PROGRAM MENU				
Community Inreach/Outreach				include cost range
Consult Room	1	150	150	Table and chairs or lounge furniture. Seating for 6
Community Room, small	1	500	500	Storage closet for furniture/equipment, counter with upper and lower cabinets, open floor space to accommodate a variety of configurations
Community Room, large	1	800	800	Storage closet for furniture/equipment, counter with upper and lower cabinets, open floor space to accommodate a variety of configurations
Teaching Kitchen	1	75	75	Counter, refrigerator, outlets for plug-in appliances, CCTV
Teaching kitchen cart	1	30	30	Electrified, countertop with lower shelves for doing demonstrations using electric skillet or burners.
Food pantry	1	100	100	Room with shelves for housing dry goods/formula or nutrition supplement samples
Healthy Dining				Onsite offerings that are healthy and accommodate dietary restrictions (ie. Gluten free)
Farmers Market				space in an atrium, courtyard or parking lot with electrical hookups
Targeted Retail				Free or reduced cost items that enhance care (wigs, head scarves) or experience (beauty shop, tattoo)
Grocery				Grocery options that fit specific diet recommendations (partnership with local grocery)
Resource Center/ Computer lab	1	250	250	Internet access and training courses, storage for handouts
Community Garden	1	1,000	1000	Sensory garden, horticultural therapy, interactive learning space (partnership with CDC, municipality , university or other non-profit)
Daycare				Drop in short term care and/or partnership with daycare provider located adjacent to site
Health fair				space in an atrium, courtyard or parking lot with electrical hookups

	HEALTH BEYOND BUILDINGS
	
	
	
	
	WELCOMING AND INCLUSIVE
	
	
	
	REGENERATIVE
	
	
	
	

THANK YOU



RACHEL WOTAWA SCHWEIKL

AIA, EDAC

Associate | Medical Planner

rwotawa@gbbn.com



MICHAEL GRAGE

AIA

Principal | Project Manager

mgrage@gbbn.com

